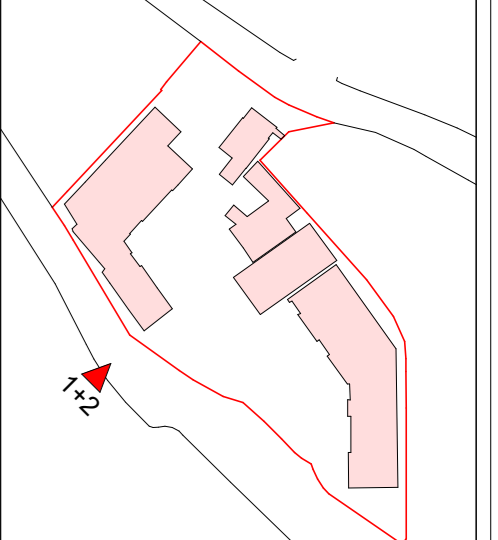
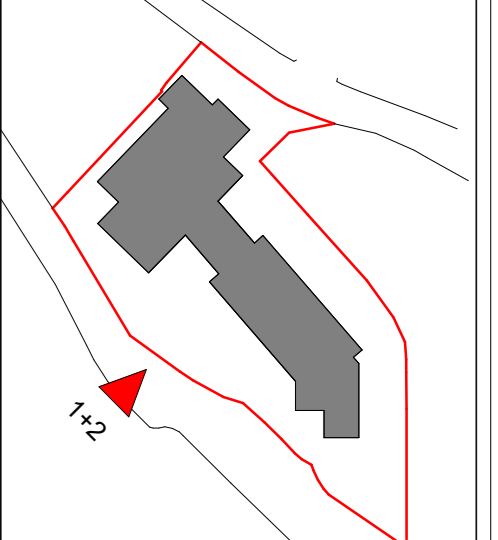


All dimensions to be checked on site. Figured dimensions take preference over scaled dimensions. Any error in dimensions shall be reported to the Architect. This drawing may not be relied on or modified by the recipient.
Copyright and ownership of this drawing is vested in RKD Architects, whose prior written consent is required for its use, reproduction or for publication to any third party. All rights reserved by the use of copyright and its enforcement and any proceedings for damages and/or expenses and costs.
RKD Architects Quality Management Systems are certified to ISO 9001:2015.

Note:

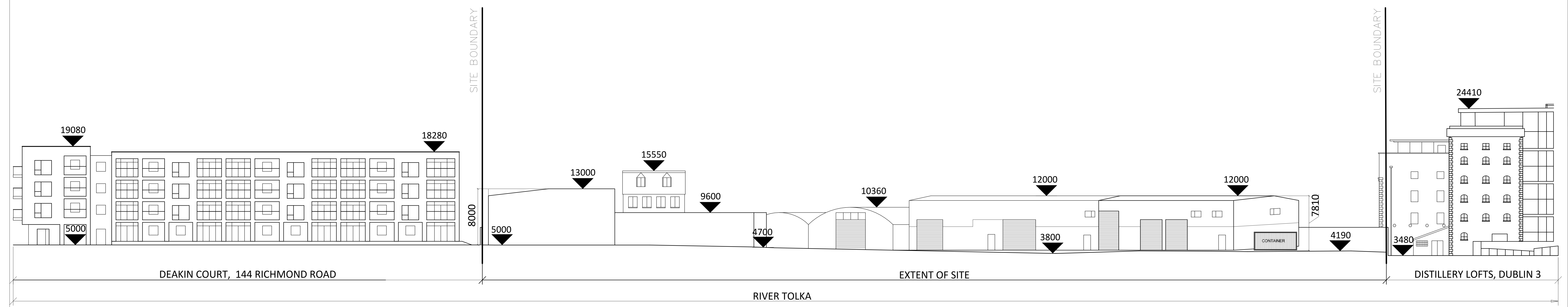


EXISTING KEY PLAN
Scale 1:2000

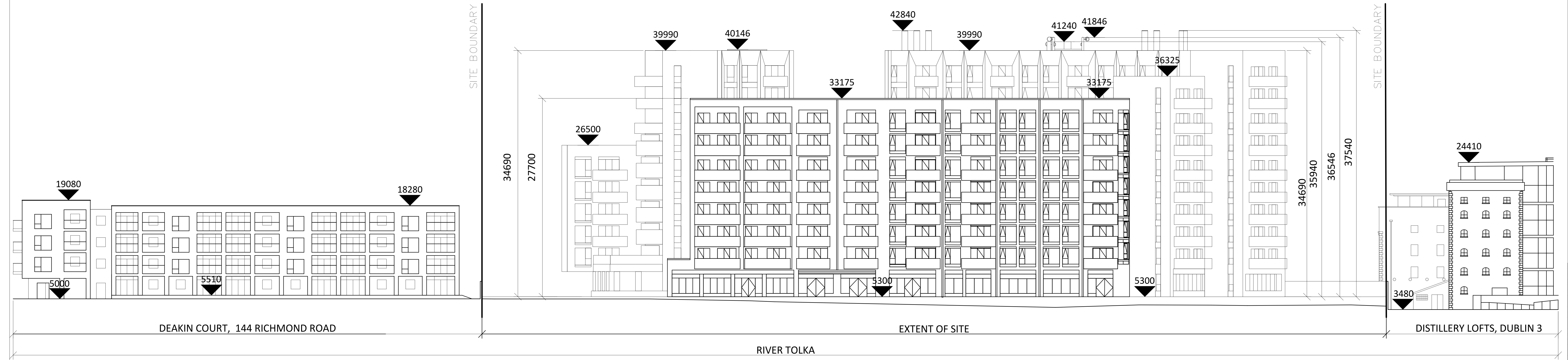


PROPOSED KEY PLAN
Scale 1:2000

All levels shown are to the top Transverse Member (T/M) and are finished in millimetre (mm).
All levels shown relate to the mean head datum.
All dimensions shown are in millimetres.



1 Existing South Contextual Elevation
1:200



2 Proposed South Contextual Elevation
1:200

Revision table with columns: Rev., Date, Description.

Project information table with fields: STATUS (PLANNING), PROJECT (RICHMOND ROAD), PROJECT ADDRESS (Nos. 146A and Nos. 148-148A Richmond Road, Dublin 3), DWG TITLE (CONTEXTUAL ELEVATIONS - SHEET 1 OF 2), DWG NO. (20199-RKD-ZZ-ZZ-DR-A-1303), REV. (P2), STATUS (PLANNING), PROJECT NO. (20199), DATE (DEC 2021), DRN (CT), CHK (HB).

