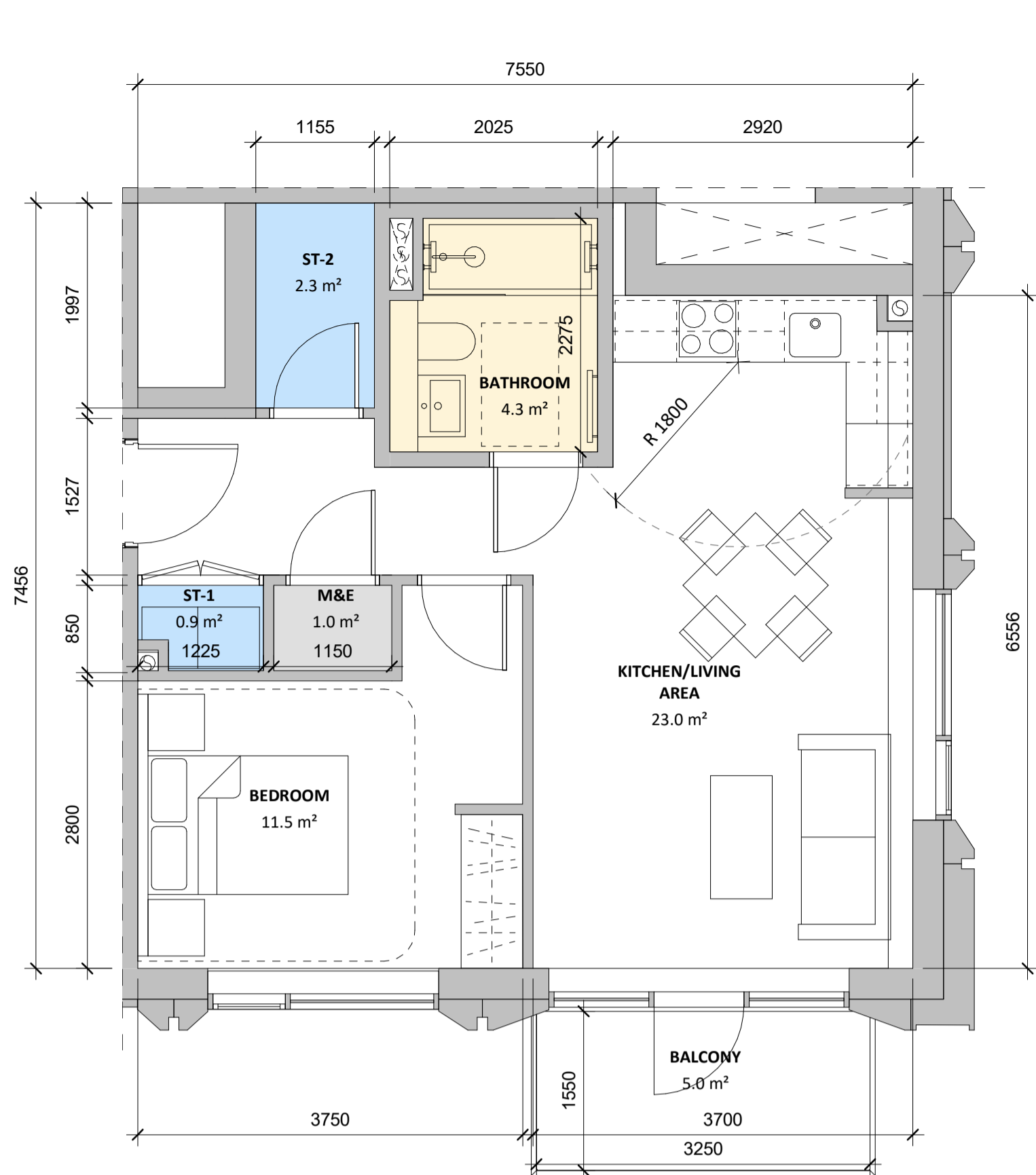


All dimensions to be checked on site. Figured dimensions take preference over scaled dimensions. Any errors or discrepancies to be reported to the Architects. This drawing may not be edited or modified by the recipient.

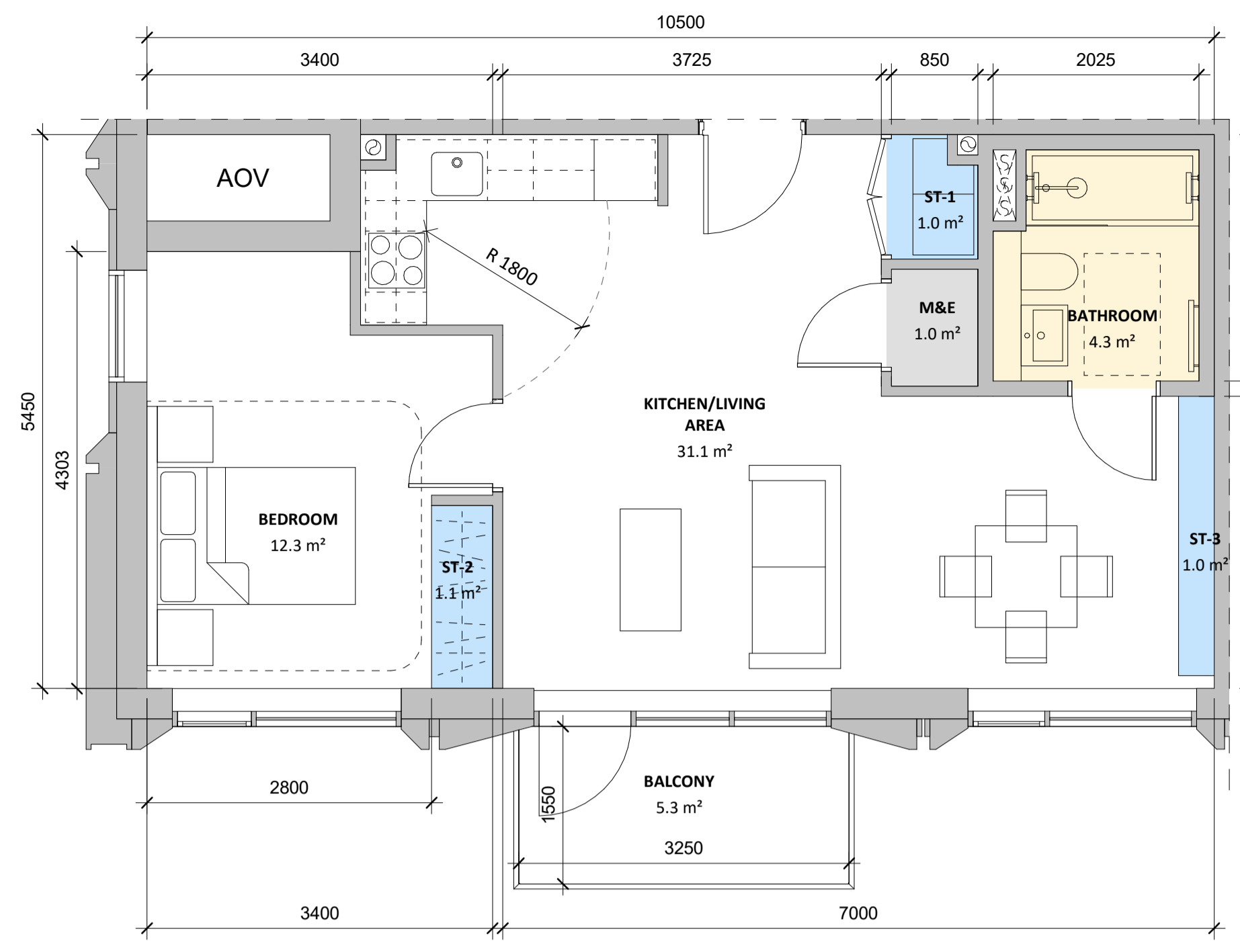
Copyright and ownership of this drawing is vested in RKD Architects, whose prior written consent is required for its use, reproduction or for publication to any third party. All rights reserved by the law of copyright and by international copyright conventions are reserved to RKD Architects and may be protected by court proceedings for damages and/or injunctions and costs. RKD Architects' Quality Management Systems are certified to ISO 9001:2015.

Notes:



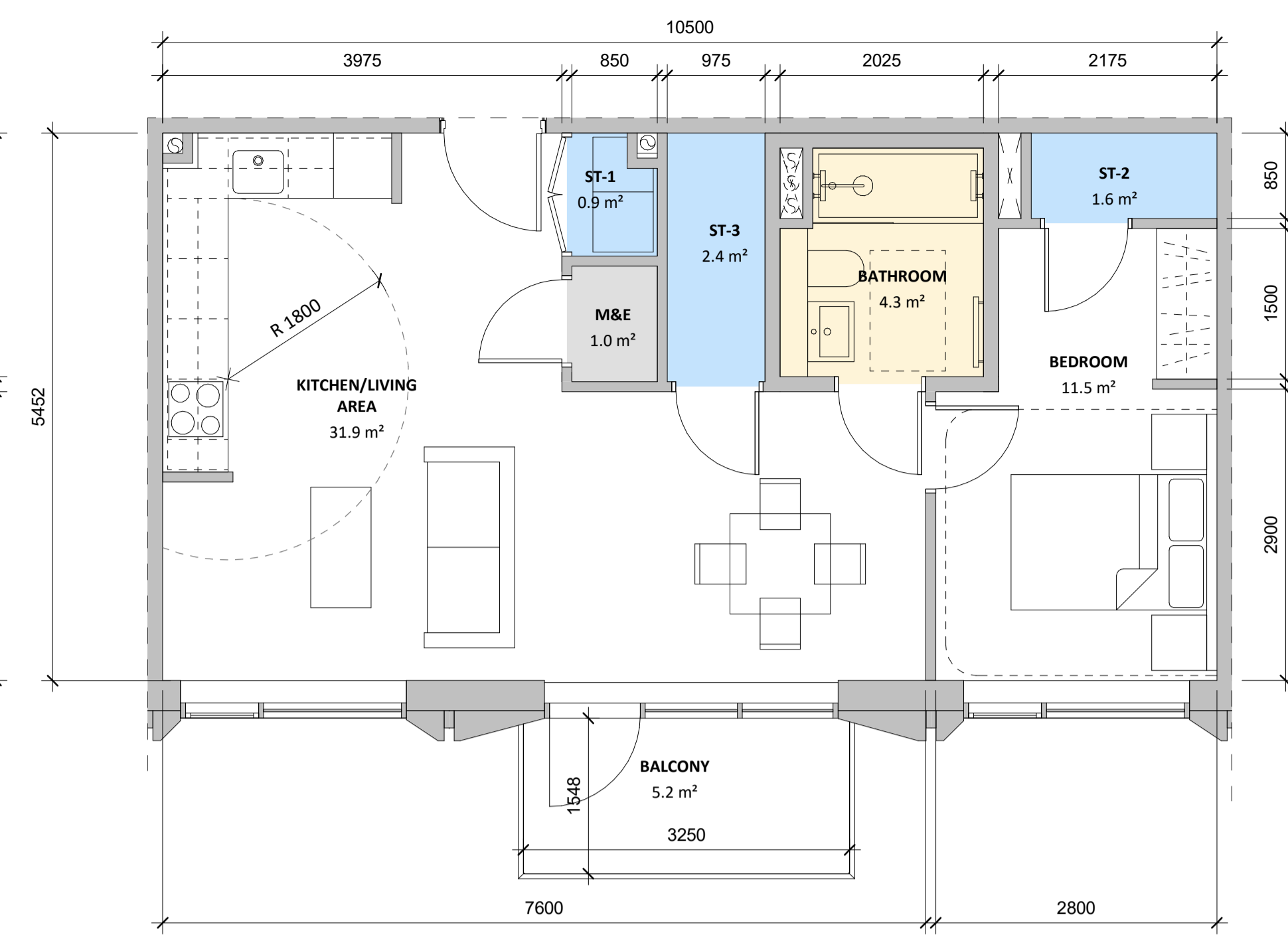
**APARTMENT TYPE - 1B2P\_05**

| NAME                | AREA ACHIEVED (m2)  | AREA REQUIRED (m2)  |
|---------------------|---------------------|---------------------|
| GIA                 | 51.2 m <sup>2</sup> | 45 m <sup>2</sup>   |
| NIA                 | 50.6 m <sup>2</sup> |                     |
| BATHROOM            | 4.3 m <sup>2</sup>  |                     |
| BEDROOM             | 11.5 m <sup>2</sup> | 11.4 m <sup>2</sup> |
| HALL                | 4.9 m <sup>2</sup>  |                     |
| KITCHEN/LIVING AREA | 23.0 m <sup>2</sup> | 23 m <sup>2</sup>   |
| M&E                 | 1.0 m <sup>2</sup>  |                     |
| ST-1                | 1.0 m <sup>2</sup>  | 3 m <sup>2</sup>    |
| ST-2                | 2.3 m <sup>2</sup>  |                     |



**APARTMENT TYPE - 1B2P\_06**

| NAME                | AREA ACHIEVED (m2)  | AREA REQUIRED (m2)  |
|---------------------|---------------------|---------------------|
| GIA                 | 54.8 m <sup>2</sup> | 45 m <sup>2</sup>   |
| NIA                 | 54.1 m <sup>2</sup> |                     |
| BATHROOM            | 4.3 m <sup>2</sup>  |                     |
| BEDROOM             | 12.3 m <sup>2</sup> | 11.4 m <sup>2</sup> |
| KITCHEN/LIVING AREA | 31.2 m <sup>2</sup> | 23 m <sup>2</sup>   |
| M&E                 | 1.0 m <sup>2</sup>  |                     |
| ST-1                | 1.0 m <sup>2</sup>  |                     |
| ST-2                | 1.1 m <sup>2</sup>  | 3 m <sup>2</sup>    |
| ST-3                | 1.0 m <sup>2</sup>  |                     |



**APARTMENT TYPE - 1B2P\_07**

| NAME                | AREA ACHIEVED (m2)  | AREA REQUIRED (m2)  |
|---------------------|---------------------|---------------------|
| GIA                 | 57.2 m <sup>2</sup> | 45 m <sup>2</sup>   |
| NIA                 | 56.5 m <sup>2</sup> |                     |
| BATHROOM            | 4.3 m <sup>2</sup>  |                     |
| BEDROOM             | 11.6 m <sup>2</sup> | 11.4 m <sup>2</sup> |
| KITCHEN/LIVING AREA | 31.9 m <sup>2</sup> | 23 m <sup>2</sup>   |
| M&E                 | 1.0 m <sup>2</sup>  |                     |
| ST-1                | 0.9 m <sup>2</sup>  |                     |
| ST-2                | 2.4 m <sup>2</sup>  | 3 m <sup>2</sup>    |
| ST-3                | 1.6 m <sup>2</sup>  |                     |



**APARTMENT TYPE - 2B4P\_01**

| NAME                | AREA ACHIEVED (m2)  | AREA REQUIRED (m2)  |
|---------------------|---------------------|---------------------|
| GIA                 | 76.9 m <sup>2</sup> | 73 m <sup>2</sup>   |
| NIA                 | 75.5 m <sup>2</sup> |                     |
| BATHROOM            | 4.3 m <sup>2</sup>  |                     |
| BEDROOM 1           | 13.0 m <sup>2</sup> | 13 m <sup>2</sup>   |
| BEDROOM 2           | 11.4 m <sup>2</sup> | 11.4 m <sup>2</sup> |
| KITCHEN/LIVING AREA | 30.9 m <sup>2</sup> | 30 m <sup>2</sup>   |
| M&E                 | 1.0 m <sup>2</sup>  |                     |
| ST-1                | 1.0 m <sup>2</sup>  |                     |
| ST-2                | 0.7 m <sup>2</sup>  |                     |
| ST-3                | 1.5 m <sup>2</sup>  | 6 m <sup>2</sup>    |
| ST-4                | 1.8 m <sup>2</sup>  |                     |
| ST-5                | 1.1 m <sup>2</sup>  |                     |



**APARTMENT TYPE - 2B4P\_02**

| NAME                | AREA ACHIEVED (m2)  | AREA REQUIRED (m2)  |
|---------------------|---------------------|---------------------|
| GIA                 | 79.3 m <sup>2</sup> | 73 m <sup>2</sup>   |
| NIA                 | 77.9 m <sup>2</sup> |                     |
| BATHROOM            | 4.3 m <sup>2</sup>  |                     |
| BEDROOM 1           | 13.0 m <sup>2</sup> | 13 m <sup>2</sup>   |
| BEDROOM 2           | 11.5 m <sup>2</sup> | 11.4 m <sup>2</sup> |
| HALL                | 3.4 m <sup>2</sup>  |                     |
| KITCHEN/LIVING AREA | 30.0 m <sup>2</sup> | 30 m <sup>2</sup>   |
| M&E                 | 1.0 m <sup>2</sup>  |                     |
| ST-1                | 1.0 m <sup>2</sup>  |                     |
| ST-2                | 2.2 m <sup>2</sup>  |                     |
| ST-3                | 1.1 m <sup>2</sup>  |                     |
| ST-4                | 1.0 m <sup>2</sup>  |                     |
| ST-5                | 1.1 m <sup>2</sup>  |                     |

P2 09/12/2021 Issued for Planning Submission  
 P1 17/06/2021 Issued for Pre-Application Submission

| Rev. | Date | Description |
|------|------|-------------|
|      |      |             |

**BIRKEY LTD**

STATUS **PLANNING**

PROJECT **RICHMOND ROAD**

PROJECT ADDRESS **No. 146A and Nos. 148-148A Richmond Road, Dublin 3**

DWG TITLE **APARTMENT TYPES - SHEET 2 OF 4**

DWG NO. **20199-RKD-ZZ-ZZ-DR-A-1501**

| REV. | STATUS | PROJECT NO. |
|------|--------|-------------|
| P2   |        | 20199       |

SCALE **1 : 50**

DATE **DEC 2021** DRN **AMG** CHK **HB**

**RKD**

59 Northumberland Rd, Ballsbridge, Dublin 4, D04 W9P6, Ireland. +353 1 668 1055 mail@rkd.ie rkd.ie