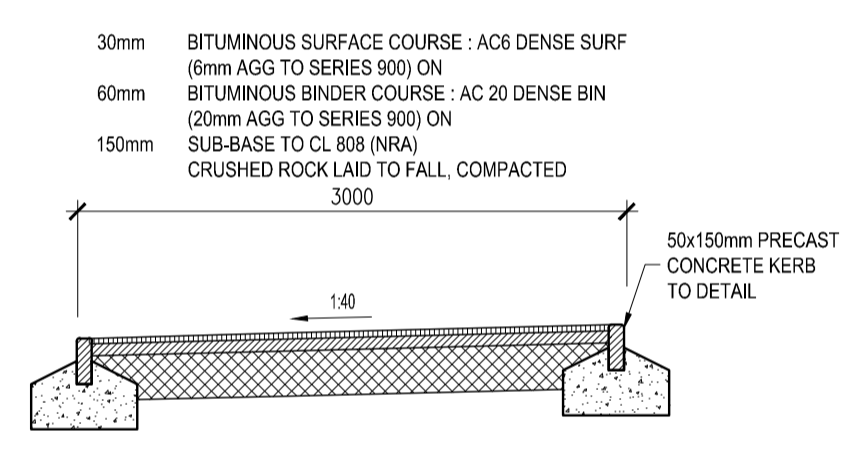
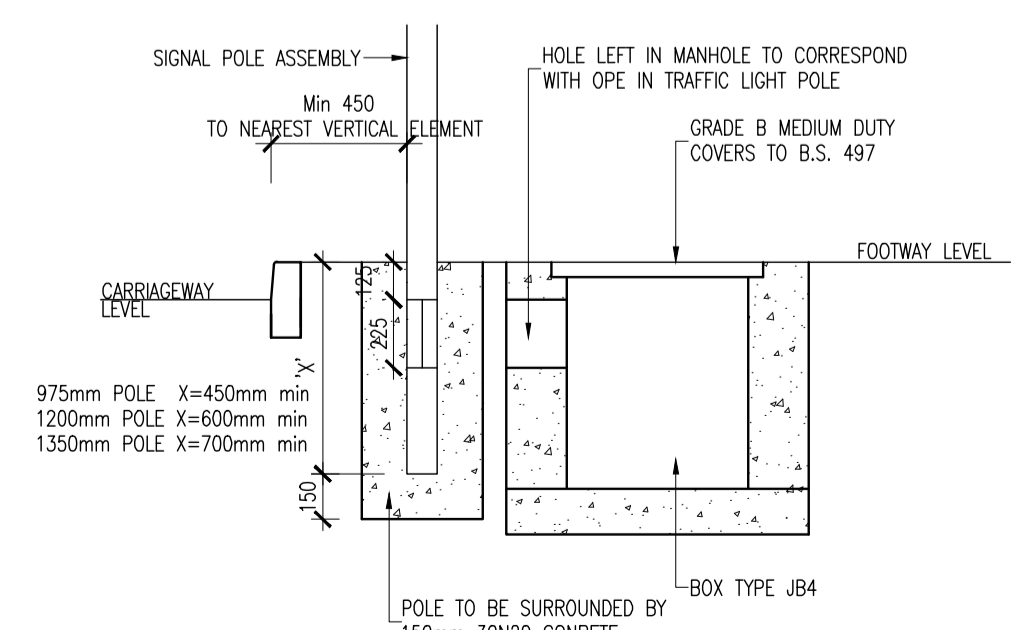
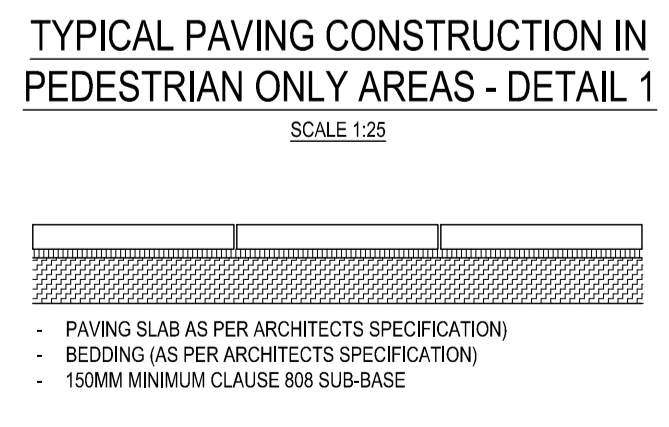
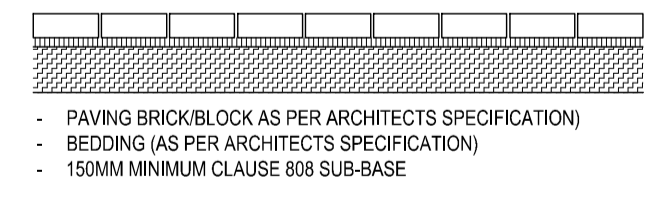


NOTE:
ROAD GULLYS TO BE PROVIDED IF SITE CONDITIONS REQUIRE.

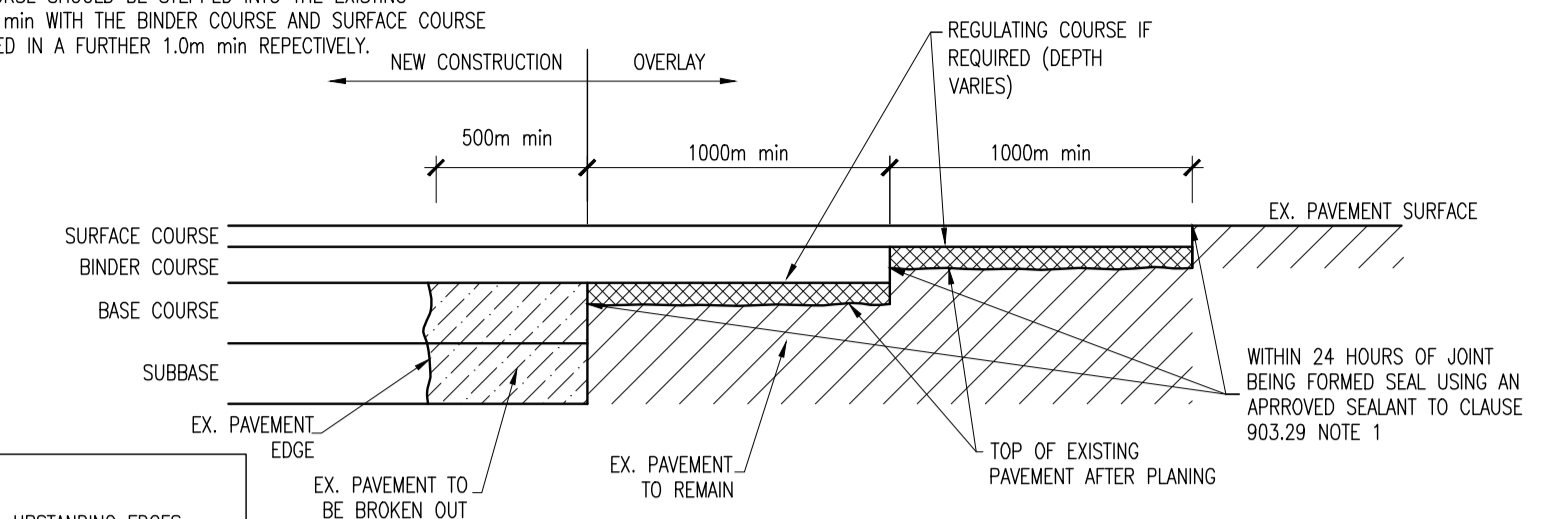


TYPICAL SHARED PEDESTRIAN & CYCLE PATH CROSS-SECTION
SCALE 1:25



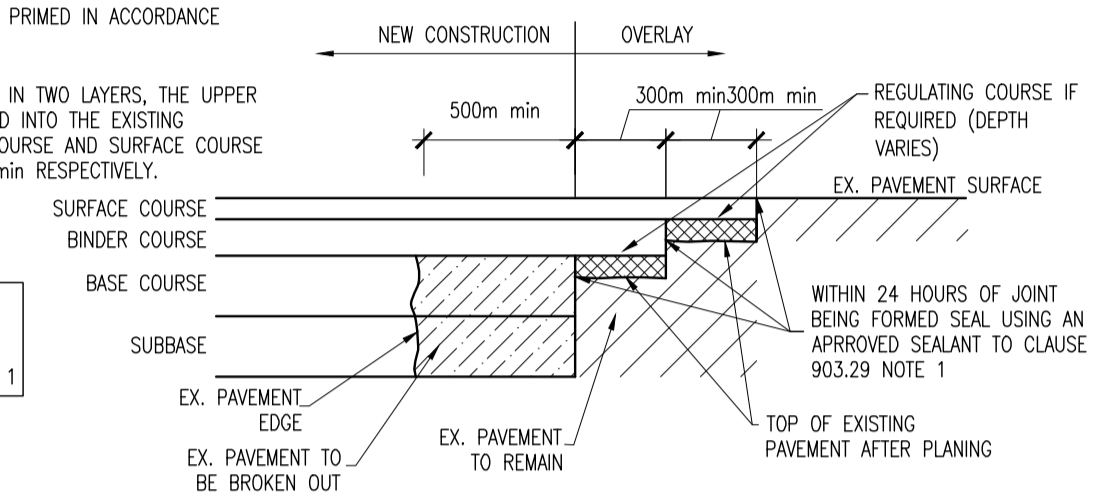
TRAFFIC SIGNAL POLE AND BOX INSTALLATION
SCALE 1:25

- NOTES :
- EDGES OF EXISTING CARRIAGEWAY TO BE CUT BACK BY 0.5m WITH A ROTARY SAW TO FORM A VERTICAL FACE AND PRIMED IN ACCORDANCE WITH CLAUSE 920 (NOTE 1).
 - WHERE THE BASE COURSE IS TO BE LAID IN TWO LAYERS, THE UPPER LAYER OF BASE COURSE SHOULD BE STEPPED INTO THE EXISTING PAVEMENT BY 1.0m MIN WITH THE BINDER COURSE AND SURFACE COURSE TO BE EACH STEPPED IN A FURTHER 1.0m MIN RESPECTIVELY.

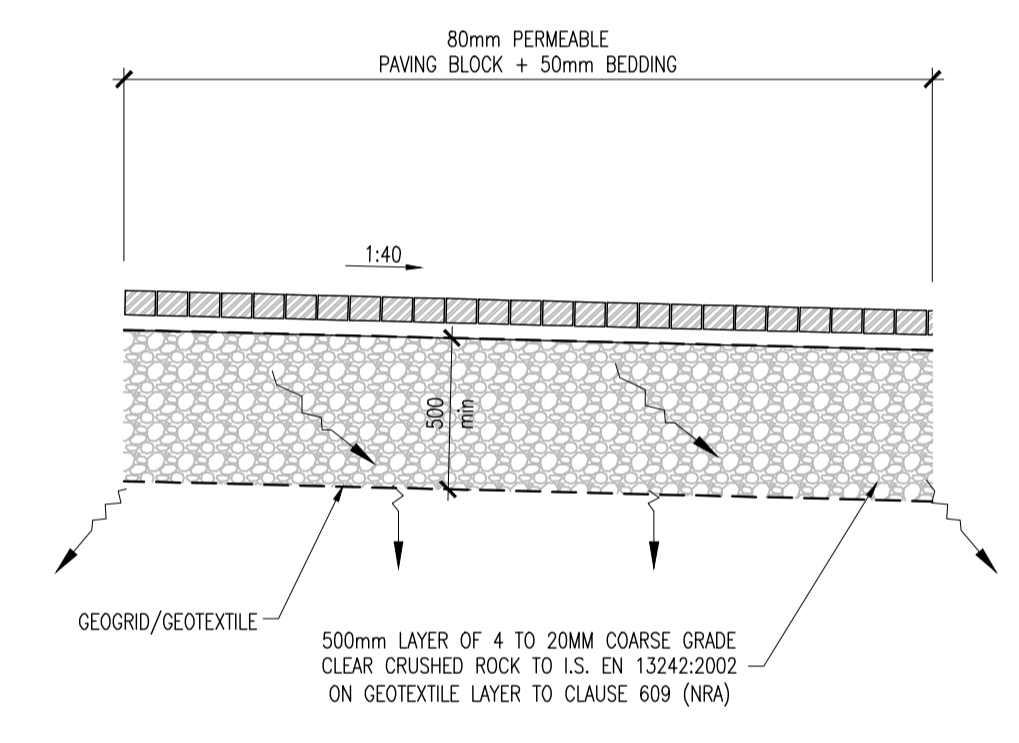


NOTE :
ALL FACES OF COLD UPSTANDING EDGES SHALL BE TREATED TO CLAUSE 903.26 NOTE 1

- NOTES :
- EDGES OF EXISTING CARRIAGEWAY TO BE CUT BACK BY 0.5m WITH A ROTARY SAW TO FORM A VERTICAL FACE AND PRIMED IN ACCORDANCE WITH CLAUSE 920 (NOTE 1).
 - WHERE THE BASE COURSE IS TO BE LAID IN TWO LAYERS, THE UPPER LAYER OF BASE COURSE SHOULD BE STEPPED INTO THE EXISTING PAVEMENT BY 0.3m MIN WITH THE BINDER COURSE AND SURFACE COURSE TO BE EACH STEPPED IN A FURTHER 0.3m MIN RESPECTIVELY.



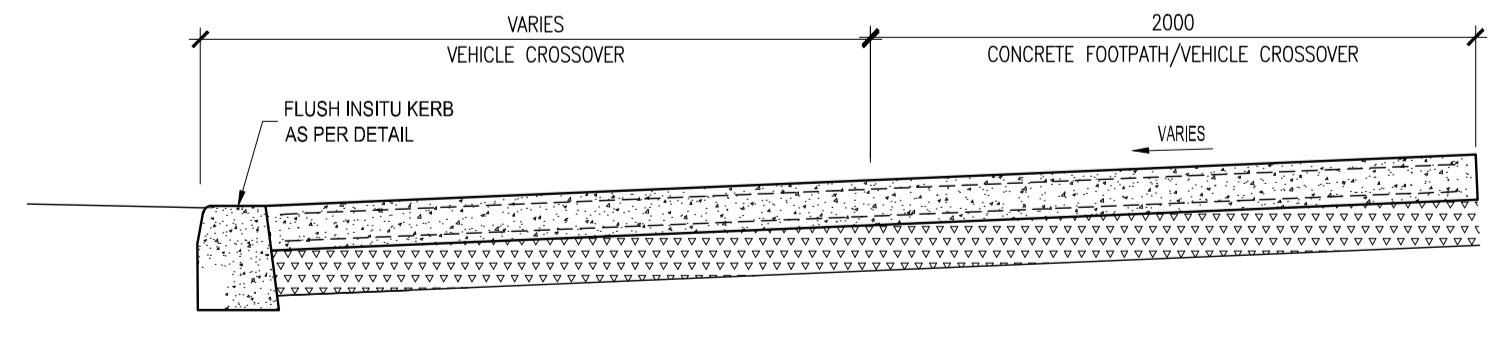
NOTE :
ALL FACES OF COLD UPSTANDING EDGES SHALL BE TREATED TO CLAUSE 903.26 NOTE 1



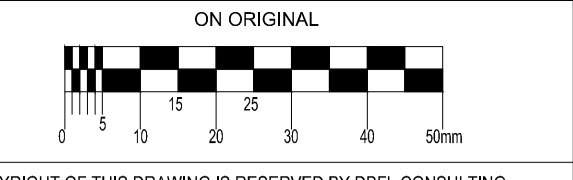
TYPICAL SECTION THROUGH PERMEABLE PAVING
SCALE 1:25

CONCRETE FOOTPATH

- 150mm CONCRETE PAVEMENT AT VEHICLE CROSSINGS WITH A393 MESH TOP AND BOTTOM C40 AIR ENTRAINED OR C50 NO AIR ENTRAINED (EXPOSURE CLASS XF4) TO NRA CL 1106 ON
 - 150mm UNBOUND GRANULAR SUB-BASE TYPE B TO CLAUSE 808 CLAUSE 808 NOTE 1 (MIN CBR 30%) ON
- JOINTS TO BE FORMED WITH TWO LAYERS OF BITUMINOUS FELT FOR FULL SLAB DEPTH AT 3m CENTRES (JOINTS TO COINCIDE WITH JOINTS IN THE KERB AND POSITIONED AT CORNERS ETC LIABLE TO CRACKING). FINISH BY FLOATING WITH WOODEN TROWEL WHILE STILL GREEN THEN LIGHTLY BRUSHED WITH A BRASS BROOM TO PRODUCE SLIGHT ROUGHNESS.



TYPICAL CONCRETE FOOTPATH/VEHICLE CROSSOVER CROSS-SECTION AT SITE ACCESS
SCALE 1:25



© COPYRIGHT OF THIS DRAWING IS RESERVED BY DBFL CONSULTING ENGINEERS. NO PART SHALL BE REPRODUCED OR TRANSMITTED WITHOUT THEIR WRITTEN PERMISSION.

NO CHANGES OF WHATSOEVER NATURE ARE TO BE MADE TO ANY DETAILS SET OUT OR CONTAINED IN ANY DBFL SPECIFICATIONS OR DRAWINGS UNLESS THE EXPRESS CONSENT HAS BEEN OBTAINED IN ADVANCE, IN WRITING FROM DBFL.

- NOTES:
- CLOSE GRADED SURFACE COURSE MACADAM SHALL COMPLY WITH THE REQUIREMENTS OF CLAUSE 912 OF THE NRA'S 'SPECIFICATION FOR ROAD WORKS' AND SHALL SATISFY THE REQUIREMENTS OF TABLE 9/2. IT SHALL BE LAID & COMPACTED IN ACCORDANCE WITH CLAUSE 901 & CLAUSE 702
 - DENSE BITUMEN MACADAM BINDER COURSE SHALL COMPLY WITH THE REQUIREMENTS OF CLAUSE 906 OF THE NRA'S 'SPECIFICATION FOR ROAD WORKS' & SHALL SATISFY THE REQUIREMENTS OF TABLE 9/1. IT SHALL BE LAID & COMPACTED IN ACCORDANCE WITH CLAUSE 901 & CLAUSE 702.
 - SUB-BASE MATERIAL SHALL COMPLY WITH CLAUSE 808 GRANULAR MATERIAL TYPE B OF NRA'S 'SPECIFICATION FOR ROAD WORKS (SRW)' & SHALL SATISFY THE REQUIREMENTS OF TABLE 6/1 & 6/2.
 - STONE BLINDING WITH 2-6.3mm AGGREGATE SHALL MEET THE FOLLOWING GRADINGS, IN ACCORDANCE WITH IS EN 13242
- | BS SIEVE SIZE (mm) | % BY MASS PASSING |
|--------------------|-------------------|
| 14 | 100 |
| 10 | 98-100 |
| 6.3 | 80-99 |
| 2.0 | 0-20 |
| 1.0 | 0-5 |
- CRUSHED STONE WITH 4-20mm AGGREGATE SHALL MEET THE FOLLOWING GRADINGS, IN ACCORDANCE WITH IS EN 13242
- | BS SIEVE SIZE (mm) | % BY MASS PASSING |
|--------------------|-------------------|
| 40 | 100 |
| 31.5 | 98-100 |
| 20 | 90-99 |
| 10 | 25-70 |
| 4 | 0-15 |
| 5 | 0-5 |
- ANY ROADS PROPOSED TO BE USED FOR CONSTRUCTION TRAFFIC ARE TO HAVE INCREASED DEPTH OF SUB-BASE FOR THE DURATION OF CONSTRUCTION IN ACCORDANCE WITH DBFL SPECIFICATIONS.
 - ALL WORKS SHALL BE COMPLETED IN ACCORDANCE WITH THE REQUIREMENTS OF THE LOCAL AUTHORITY.
 - ALL PERMEABLE PAVING SUB-FORMATION TO BE LAID TOWARD DRAINAGE PIPEWORK.

PROJ	20-12-21	SHD STAGE 3 PLANNING	RMC	CS
P01	16-06-21	SHD STAGE 2 PLANNING	ICD	ASM
REV	date	description	by	chkd.
client approval		A - Approved		
		B - Approved with comments		
		C - Do not use		

client approval: A - Approved, B - Approved with comments, C - Do not use

DBFL Consulting Engineers
Civil, Structural & Transportation Engineering
www.dbfl.ie

DUBLIN OFFICE: Ormond House, Upper Ormond Quay, Dublin 7, D07 W704
PHONE: +353 1 410 4000
CDR OFFICE: 14 South Mall, Cork, T12 CP91
PHONE: +353 21 2026538

WATERFORD OFFICE: Suite 85 The Altium, Marlboro Gate, Canada Street, Waterford, X51 W028
PHONE: +353 51 309 500

project ref.
RICHMOND ROAD, DUBLIN 3

drawing title
TYPICAL ROAD CONSTRUCTION DETAILS

client
BIRKEY LIMITED

designed by	author	scale	sheet size
DMW	ICD	AS NOTED	A1
drawing no.	revision		
210027-DBFL-RD-SP-DR-C-5001	P02		